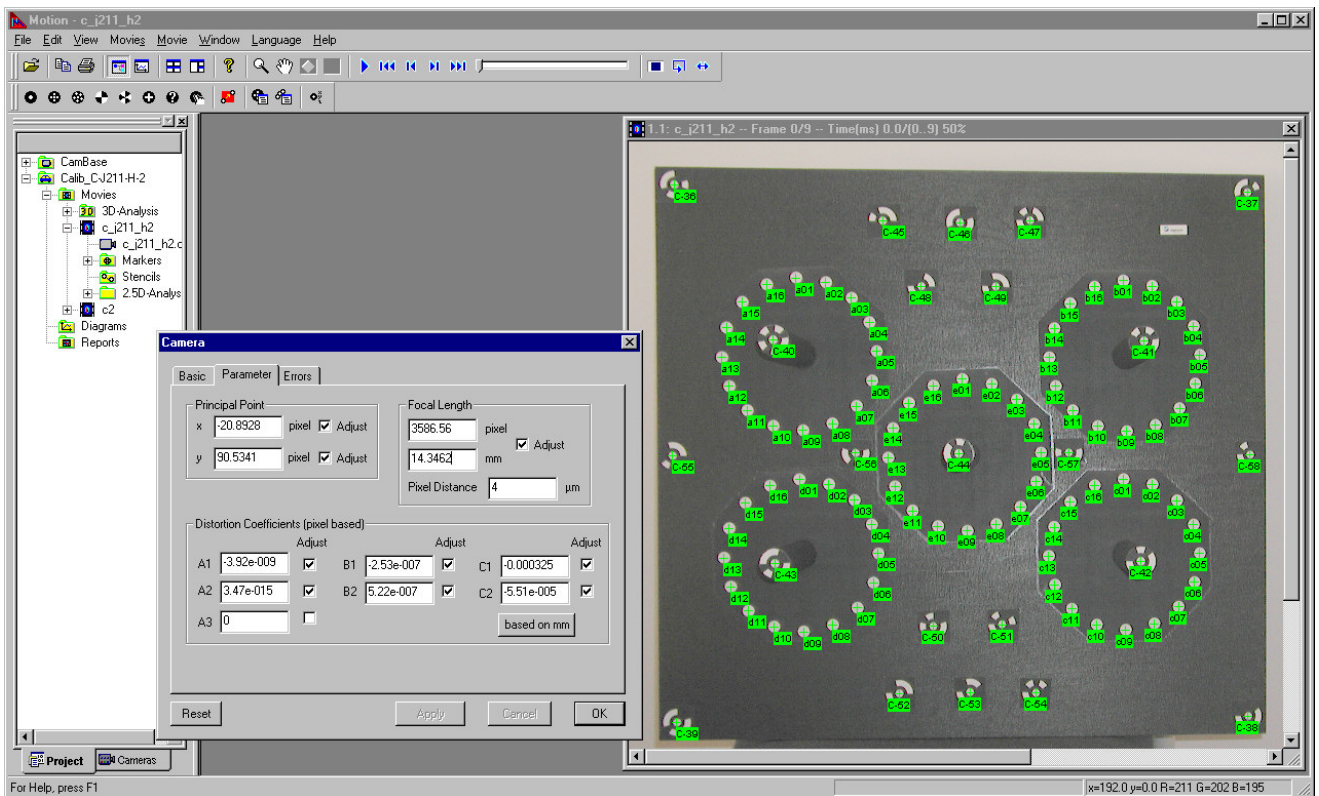


MOTION

O-Calibrate



Computer Supported Calibration of Cameras



Features of MOTION O-Calibrate

- Automatic identification of coded marker in images
- Automatic correspondence of uncoded marker by control-points given in a file
- Supports all known formats of coded marker and control-points file, therefore calibration-fields of other manufacturer can be used as well
- Highest-achievable accuracy with bundle adjustment with free network
- Calibration could be restricted to a selected subset of parameters of the camera model
- Quality measure is given by residual error and standard deviations of calibrated parameters
- Evaluation of SAE-J211 index
- Easy storage of camera parameters in the ISO-MME format
- Easy retrieval of camera parameters for film analysis

In addition to Motion Analysis following features are included:

- calibration plate made of composite materials
- Marker are placed according to SAE-J211
- 3D calibration field with elevated marker
- Lightweight and robust material result in high stiffness and low weight (approx. 6 kg)

Option O-CamBase

- File based database for camera-lens combinations
- Easy retrieval of camera-lens parameters for analysis
- Distortion-correction of image-sequences