

# SigiStudio ClipRecorder

## Video server control

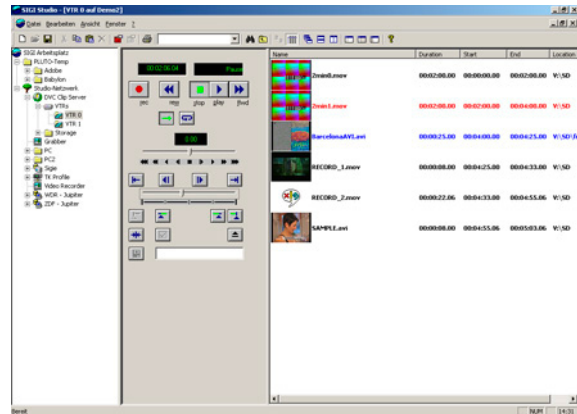


Real or virtual monitors or screens are used in several productions like news or sports to show animated graphics or video clips. To work with several video clips, it is easier if you control stills, graphics, texts and clips with an integrative user interface to drive different output channels. This is often controlled by a newsroom or an automation system.

For a video server system it is very important to support several video formats, which can be supplied right after recording without any loss of quality at conversions. The systems should support MPEG-2, DV or IMX.

Signum supports video servers of various manufacturers (e. g. Grass Valley, SGI) and implemented them into the SigiStudio environment. Recently, the ClipRecorder supporting SDI as well as HD-SDI picture formats has been integrated.

The 1 or 2 channel video server with SDI-Interface allows scheduled recording with a video editing system via network. It can be used as a standalone system or integrated within the SigiSTAR environment in which it is possible to handle Playout control with integrated video or audio mixing functionality.



### Important features

- SigiStudio ClipRecorder video server for SDI and HD-SDI
- 1 or 2channel configurations for uncompressed video clips
- 440, 880, 2400 GB capacity for more than 66 min at HD@25p and 330 min at SD@50i
- Multi format, e. g. 1080i 50/60, 1080p 24/25, 720p 50/60
- 8 channel digital AES/EBU audio, embedded audio and analogue monitoring
- Standalone system or integrated within SigiSTAR environment
- Functions to record, delete and play clips, as well as set cut-in / cut-out or mark-in / mark-out
- Clips can be directly transferred to an editing system via network
- Network based client / server structure
- Selection of clips or play lists with drag and drop
- Independent play lists for each video channel at standalone video servers