

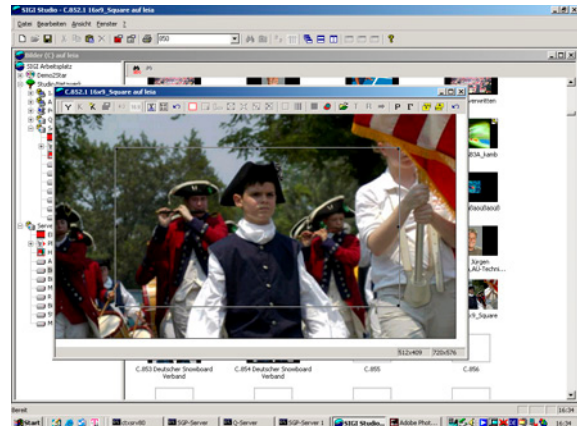
SigiStudio HDTV Grabber



For HDTV and SDI video formats with live window on PC displays

SigiStudio MediAsset Content and Media Asset Management System and option SigiStudio Multi-Format Archive support all necessary image formats for broadcast and graphics environment. If you are planning to grab single images from SDI or HD-SDI video source, you are able to use SigiStudio HDTV Grabber. The module will be integrated in a standard pc system and does not need additional components. The SDI interface supports standard video formats or HDTV formats.

During live function the image will be displayed on the pc display of SigiStudio. Therefore you are able to work without a video monitor, if useful. After freezing an image and an optional de-interlace function the image can be transferred by drag and drop into the image archive or additional systems. If necessary, you are able to create additional video formats later, using the high resolution HDTV format, without losing any precision. The SigiSTAR media server is automatically creating and storing various video formats e.g. 720x576/486 – 4:3 with rectangular aspect ratio, HDTV 1280 x 720 or 1920 x 1080 - 16:9 with square aspect ratio or corresponding preview formats for PC/MAC or network browser software. To display stored images on SDI or HD-SDI output you only have to drag and drop the corresponding media to the SigiStudio HDTV Grabber.



Important features

- SDI video input for standard video and HDTV-formats
 - Video PAL 720 x 576
 - Video NTSC 720 x 486
 - HDTV 1920 x 1080
 - HDTV 1280 x 720
- Live display of video source at PC display
- Drag and Drop functionality for image storage
- Drag and Drop functionality for image display on video output
- Automatic creation of previews with correct aspect ratio
- Grabber module will be delivered together with PC system
- System can be used for standalone or SigiStudio network operation
- Special SigiStudio software version with integrated drivers for control of HDTV grabber module
- Contents:
 - PC system as 19" rack mount or tower version
 - integrated HDTV- grabber module
 - SigiStudio software with HDTV driver
 - Local HDTV image server software
 - Opt. HDTV monitor
 - HD-SDI and SDI interface for grab and display
 - Low cost version for SDI format only available